

The Revolution is the **fastest**, most **energy efficient**, **flexible** single lane **tray sealer** available. By incorporating truly novel **technology**, the Revolution surpasses all previous products providing users with incredibly **efficient, high speed** tray sealing.

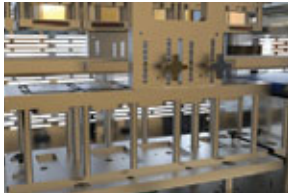
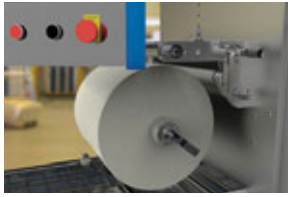
revOLution

POWERDRIVE™
FULLY ELECTRIC ZERO AIR

perfectseal

- POWERDRIVE™ – fully electric zero air
- Can seal up to 200 packs per minute single lane
- High speed (ITS) Intelligent Transfer System
- 2 minute tool changeovers
- Ultra lightweight and quick release tooling
- Inbuilt TDS (Tool Docking System) automatically aligns electrical connectors on the tool
- Ultimate in sealing flexibility
- Configurable for MAP and *SKINPAC*
- RFID fob access for customisable levels of authorisation
- Indisputable reliability
- Environmental considerations incorporated into the design





FEATURES

Machine

- POWERDRIVE™ – fully electric zero air
- High force servo driven seal station giving a 300% increase in seal force compared to conventional pneumatic systems with 98% reduction in energy usage
- Operator friendly touch screen provides machine status, self diagnostics and operator prompts
- High speed (ITS) Intelligent Transfer via an interpolated multi axis robotic motion system which ensures a continuous flow of trays through the machine from infeed to outfeed eliminating any need for pauses or buffering
- Small footprint optimises use of factory space
- Pre-set accurate recipe based temperature control
- High accuracy servo driven film feed system with easy to follow film path
- High accuracy automatic registered film set up removes the need for registered film adjustment rollers improving process operation and setup
- Film cycle operates in the same way for printed and plain film leading to smoother travel film through a date coder giving optimised operation and clearer print quality
- PCP (Pack Crush Protection) system
- Hygienic, robust construction to food industry standards with guarding to allow optimal access to the machine interior for hygiene and maintenance
- Quick and easy to remove infeed and outfeed flat PU belt conveyors for added hygiene
- Linear speed of transfer belts has been slowed to ensure smooth movement of low viscosity products without reducing machine output speed
- Operation from both sides
- Film as thin as 17 µm can be used to reduce packaging waste
- Smart system does not alarm if one I mark is missed on low quality printed film, only alarms after two consecutive misses
- Energy usage reduced during automatic standby mode

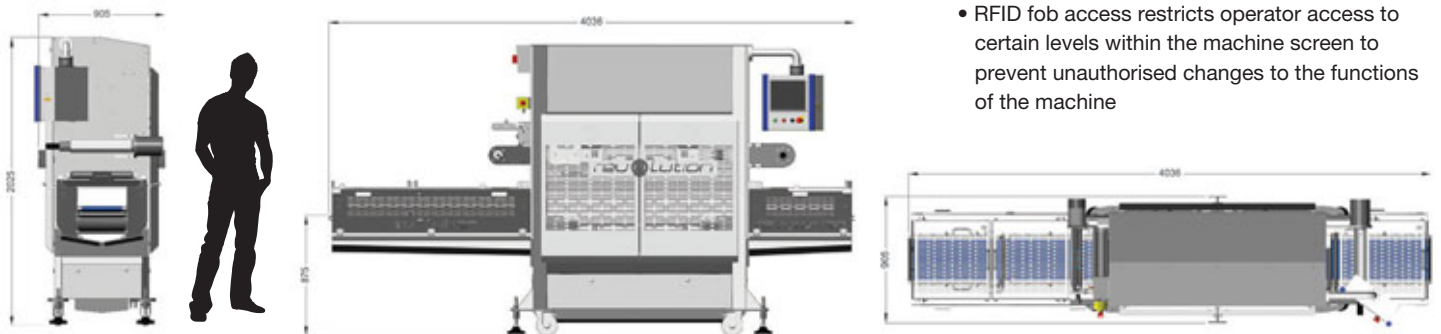
- Incorporates our novel MAGPAL technology that allows the tool lift mechanism to be deactivated during the seal process minimising machine energy usage
- Up time is maximised by zoned guarding which ensures machine cycle can be restarted without delay after a guard circuit has been broken
- Fully portable, caster mounted
- Eco-cut enabled – no film waste
- 12" touch screen HMI

Tooling

- Removable tooling impressions allow for continuous operation of the machine
- Two minute tool changeover with quick release tools
- Lightweight tooling for manual loading
- Inbuilt TDS (Tool Docking System) aligns electrical and gas connectors
- Adjustable transfer arm heights cater for any depth of tray
- Quick release cutting blades
- Waterproof heater mats reduce failures during cleaning and reduce heat up times by up to 36%
- Foil crimping

Options

- Reduced gas consumption and shorter cycle times
- MAP-F (Modified Atmosphere Packaging)
- MAP-V (Vacuum Gas Flushing)
- SHINPAC
- Automatic centralising tray guides
- Industrial remote access solution for remote diagnostics and program updates
- Eco-Cut™ - Reducing film waste
- Recipe driven settings for registered printed film automatically adjust reel position to eliminate the need for manual set up during changeovers
- Data capture solutions available
- FSP (Film Snap Protection)
- Through conveyor offers increased flexibility when packs don't need sealing
- Date coder integration ready
- SQL datalogger
- RFID fob access restricts operator access to certain levels within the machine screen to prevent unauthorised changes to the functions of the machine



TRAY LAYOUT OPTIONS AND THROUGHPUTS

MAXIMUM DIMENSIONS (MM)					
Number of trays	Length of tray	Width	Depth	Diameter (circular trays)	Production speed per min (up to)
2	506	300	100	300	50
3	300	328	100	300	75
4	300	239	100	239	100
5	300	185	100	185	125
6	300	150	100	150	150
7	300	125	100	125	175
8	300	106	100	106	200

TECHNICAL INFORMATION

Height	2100mm
Length	4036mm
Width	905mm
Weight	1500kg
Electrical supply	32A 415V 3 phase N+E 16A max/phase 50/60 hz
Production speed	Up to 25 cycles per minute

Supplied by:



t: +61 2 8882 9612
e: sales@perfectautomation.com.au
w: www.perfectautomation.com.au